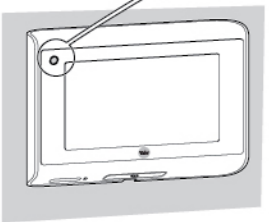


i



| LED SIGNALS: |   |
|--------------|---|
|              | Long Red: Device is turned on and WiFi successfully connected                     |
|              | Long Blue: Device going through firmware update                                   |
|              | Flashing Red & Pink: Device trying to connect to the WiFi router                  |
|              | Flashing Red & Blue: In setup mode, device is connecting to Mobile Phone directly |
|              | Flashing Red: Low battery warning   |
|              | Rapid Flashing Red: Incorrect camera connection                                   |

5

i

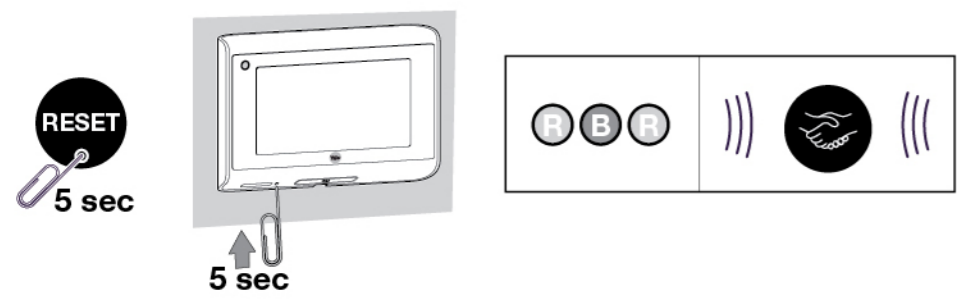


**Note:**  
The battery life varies according to the activities frequency. User can modify the device settings to optimize the battery life.



i

**Resetting:**  
After resetting to factory defaults, the door viewer will be in WiFi direct mode. It will need to be configured again through the APP.



6



**Pre-Cautions:**

- Please read this user manual carefully before using our product.
- Never attempt to repair or modify this product or its accessories by yourself, to avoid injury and invalidating guarantee.
- Any accidental factor such as being struck by lightning or any incorrect operation could cause a memory loss on the SD card. Keeping copies of the videos is recommended subjecting to the users' needs. Yale will not be responsible for any loss of data.
- DO NOT use any chemicals to clean this product, such as alcohol or benzene thinner.
- Please change the batteries soon after the low-battery indicator shows, in order to avoid any damage to this product which could be caused by battery weeping.
- For remote viewing and notifications, the LOOK Digital Door Viewer requires an 2.4GHz 802.11 b/g/n WiFi network with at least 1Mbps internet service.
- To enhance the performance of photo / video recording into the SD card, it is recommended to format the SD card with FAT32 and allocation unit size at 32 kilobytes.

**Troubleshooting:**

| Symptoms  | Suggested Actions  |
|---|--|
| 1 Screen doesn't turn on or is fuzzy              | <ul style="list-style-type: none"> <li>Check if cable is correctly connected</li> </ul>  |
| 2 Unit doesn't power up                           | <ul style="list-style-type: none"> <li>Check battery correctly installed</li> <li>Recharge battery if out of power</li> </ul>  |
| 3 Not receiving push notification in mobile phone | <ul style="list-style-type: none"> <li>Check WiFi connection is stable and strong</li> <li>Check mobile phone data connection is stable and strong</li> <li>Check mobile phone setting if the Yale LOOK is allowed to run in background and display push notifications.</li> </ul> |
| 4 Door Viewer LED keeps on flashing red and blue  | <ul style="list-style-type: none"> <li>Device is in WiFi Direct mode, user can set up the device through the APP.</li> </ul>   |

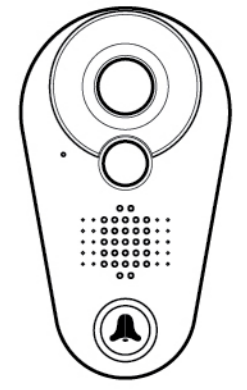
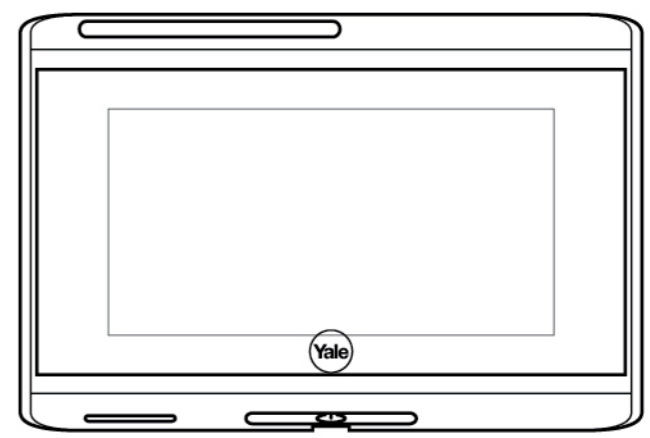
**Customer Support:**

For Additional help, please contact your local Yale supporting service;  
Or visit [www.yaleasia.com](http://www.yaleasia.com) for more information



# Yale® Digital Door Viewer

## User Manual

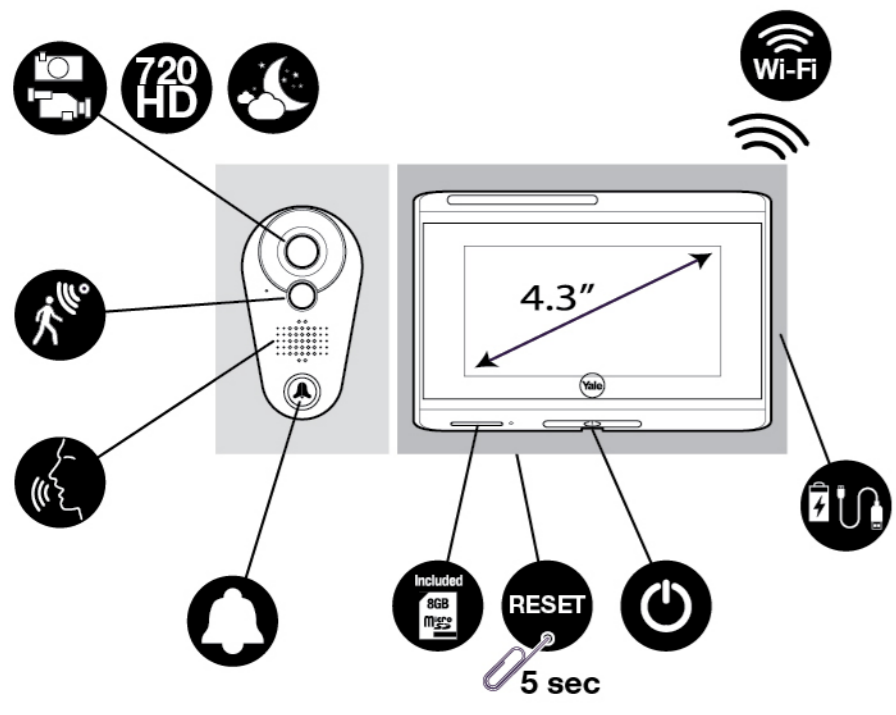
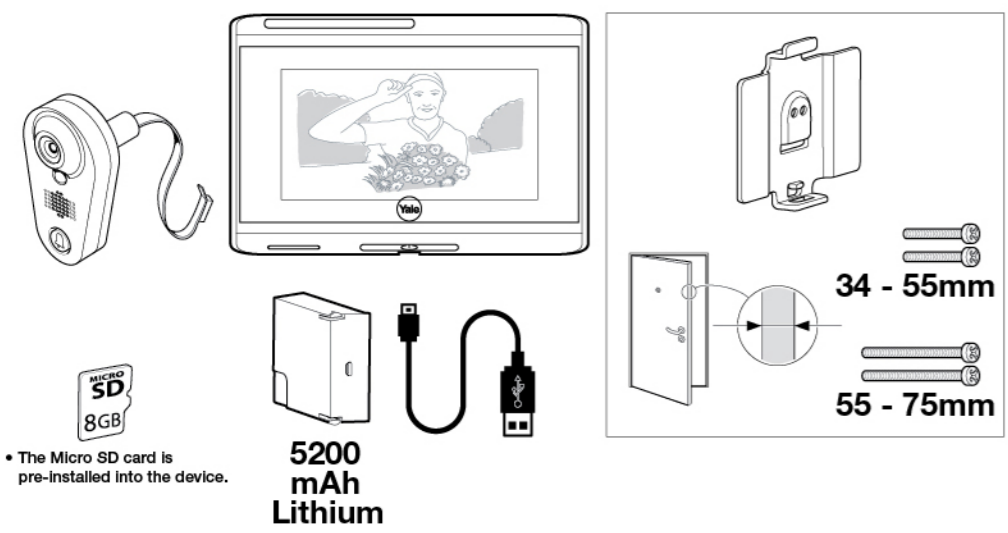


**THE YALE BRAND**, with its unparalleled global reach and range of products, reassures more people in more countries than any other consumer locking solution.

**THE ASSA ABLOY GROUP** is the world's leading manufacturer and supplier of locking solutions, dedicated to satisfying end-user needs for security, safety and convenience.

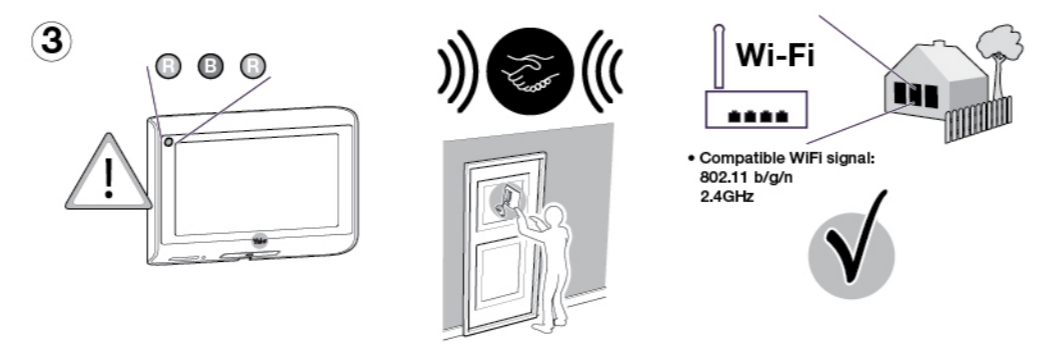
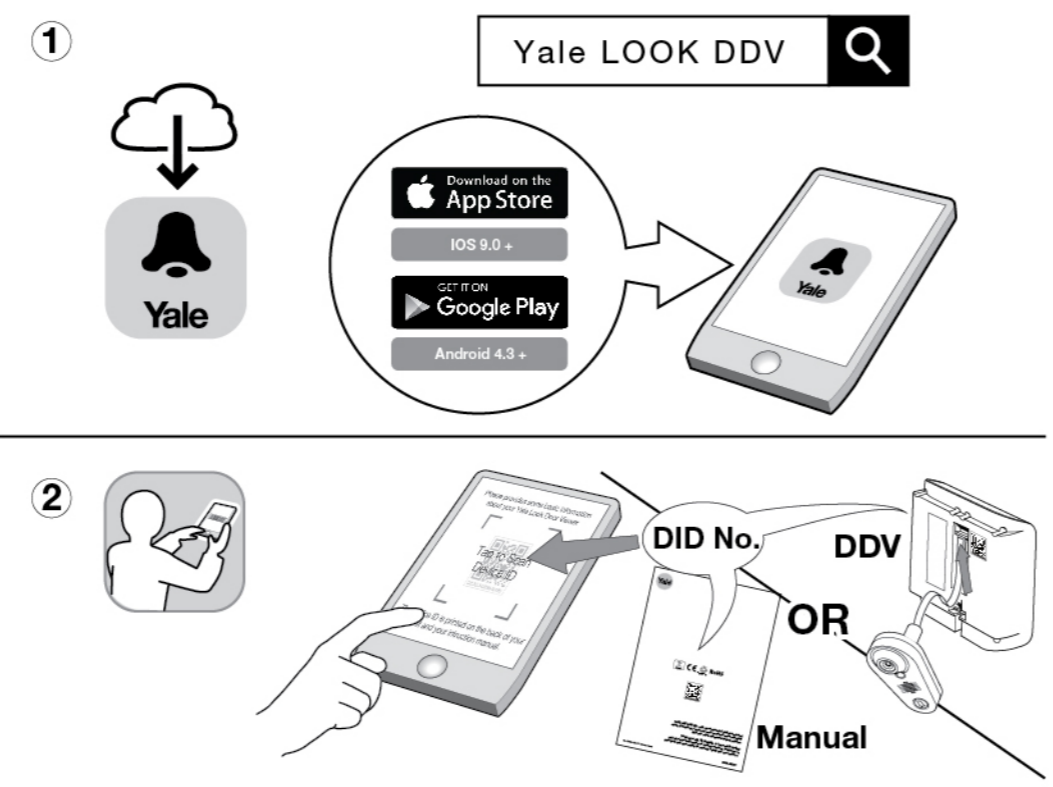


1



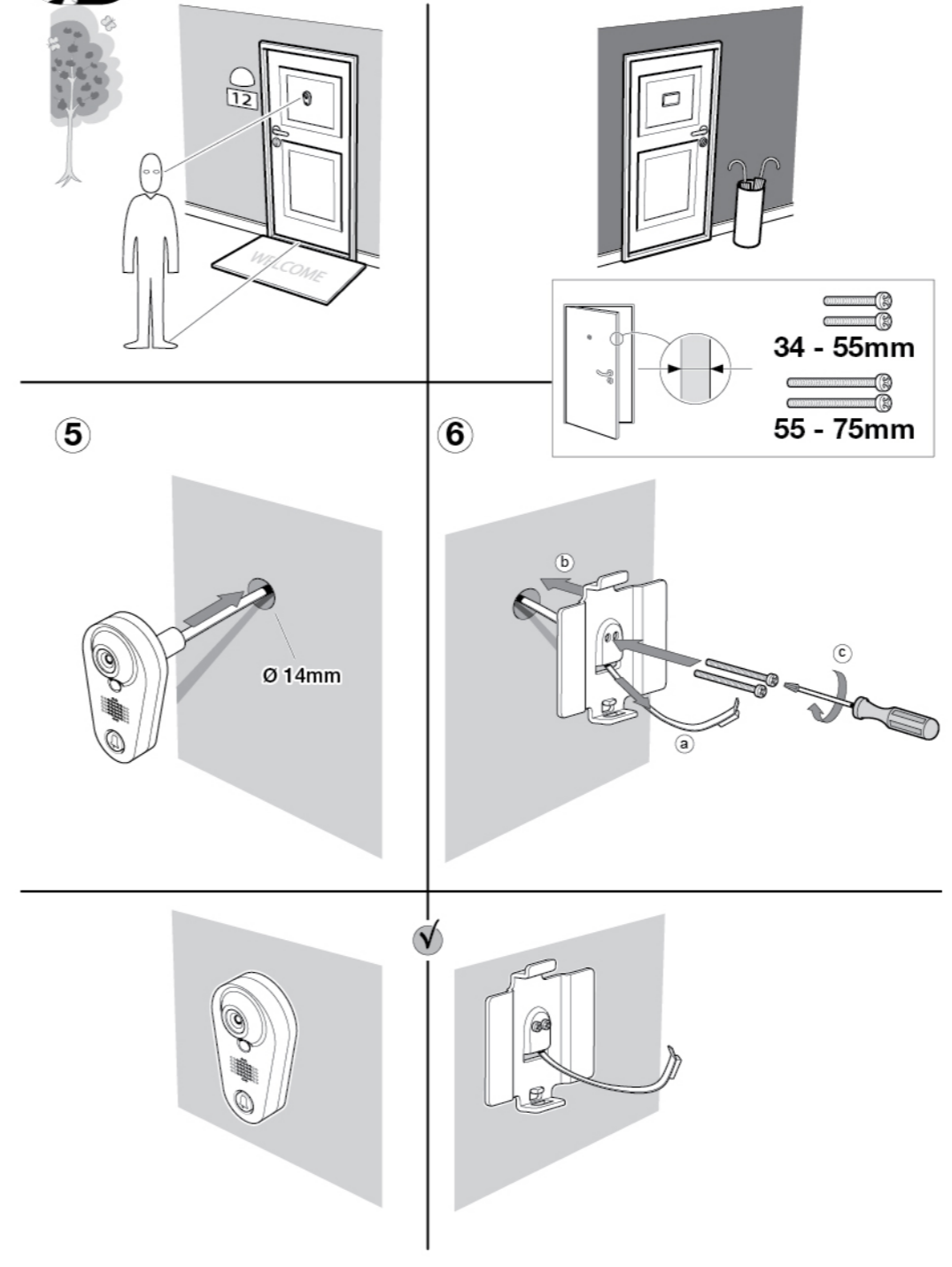
### Software Installation

2



### Device Installation

3



### Device Installation

4

